

MAJOR PROJECTS EXECUTED INCLUDE:

Over 1,000+ Renowned Hotels across 100 countries

- Atlantis, the Palm Dubai, UAE
- The Langham, London, UK
- Marina Bay Sands, Singapore
- Four Seasons Hotel, Macau
- Four Seasons Hotel, Shenzhen
- Four Seasons Hotel, Shanghai
- The Palazzo Resort Hotel Casino, Las Vegas
- The Venetian Resort Hotel Casino, Las Vegas
- Mandarin Oriental, Tokyo, Japan
- MGM Grand Macau Hotel & Casino
- The Venetian Resort Hotel Casino, Macau
- Grand Hyatt, Doha, Qatar
- W Hotel, Doha, Qatar
- Jumeirah Messilah Beach Hotel, Kuwait
- Mazagan Beach Resort, Morocco
- Marriott Hotel & Convention Centre, Pune, India
- Kempinski Hotel, Shenzhen
- Sofitel Wanda, Beijing
- Shangri-La's Far Eastern Plaza Hotel, Tainan
- The Westin, Taipei
- Sheraton Dameisha Resort, Shenzhen
- JW Marriott, Hong Kong
- White Swan Hotel, Guangzhou
- Chimelong Hengqin Bay Hotel
- SkyCity Marriott Hotel, Hong Kong
- Conrad Hotel, Hong Kong
- Kempinski Hotel Ajman, UAE
- Mövenpick Hotel, Yemen
- Crown Plaza Hotel, Oman
- Mövenpick Hotel Jumeirah Beach, Dubai, UAE
- The St. Regis Sanya Yalong Bay Resort
- Shanghai IFC & The Ritz-Carlton Shanghai, Pudong
- Renaissance Sanya Resort & Spa
- Kingkey 100 & The St. Regis Shenzhen
- The St. Regis Tianjin
- MGM Grand Sanya
- InterContinental Hotel Wuxi
- Jumeirah Himalayas Hotel, Shanghai
- THE ONE Executive Suites Shanghai by Kempinski
- Shangri-La Hotel, Xi'an
- Marco Polo Hotel, Wuhan
- Hilton Hotel, Beijing
- Grand Lisboa, Macau
- Hyatt Regency, Hangzhou
- Sofitel Wanda Hotel, Beijing
- Mandarin Oriental Hotel, Beijing
- Peninsula Palace Hotel, Beijing
- Hyatt Regency, Dongguan
- Sheraton Guangzhou Hotel
- White Swan Hotel, Changsha
- The Great Hall of the People – Reception Hall, Beijing
- Beijing Capital Airport - VIP Terminal
- The Diaoyutai State Guesthouse, Beijing
- Solaire Resort and Casino, Manila, Philippines
- Resorts World Manila, Philippines
- New World Makati Hotel, Philippines
- Marco Polo Prince Hotel, Hong Kong
- Akshardham Gandhinagar Temple, India
- The Trans Luxury Hotel Bandung, Indonesian
- Kempinski Hotel Gold Coast City, Accra, Ghana

Above list only represents a small segment of our extensive portfolio, and many other prestigious locations around the world.

To see more new exciting projects, please visit www.diamond-life.com



DIAMOND LIFE INTERNATIONAL LIGHTING GROUP LTD.

Group Headquarters: Unit 25, 8/FI., Block A Wah Luen Industrial Centre, 15-21 Wong Chuk Yeung Street, Fo Tan, N.T., Hong Kong
Tel: (852) 2601 1938
Fax: (852) 2607 1051
E-mail: info@diamonddlife.hk
www.diamond-life.com

China Factory / Showroom: Nan Mian Industrial Zone, Humen Town, Dongguan, Guangdong, China P.C: 523899
Tel: (86+769) 8551 0931 Fax: (86+769) 8552 4669
English Services Hotline: (86+769) 8513 0003
E-mail: diamonddlife@163.com (Domestic Sales)
E-mail: china@diamond-life.net (Overseas Sales)



LIGHTING PROJECTS



Ghimelong Hengqin Bay Hotel

Ghimelong Hengqin Bay Hotel, the largest ocean ecological theme hotel in China, features 1,888 spacious guestrooms and suites with a total construction area of 300,000 square-meters.

The World's Leading Lighting Specialists *CUSTOM LIGHTING & SERVICES SINCE 1979*

Diamond Life International Lighting Group Ltd., a leading specialist in the field of Decorative Lighting, renowned for its exceptional quality.

Diamond Life was first established in Hong Kong 1979. "Base in Hong Kong, back up by Mainland China and facing the World" is always the core of its development strategy. For more than 30 years, the company achieves rapid development in all direction. Diamond Life as a leading multinational lighting specialist, had headquartered in Hong Kong, with manufacturing bases in China, the Philippines and the United States. Diamond Life operates Sales & Marketing Centers in Hong Kong, Dongguan and Guzhen in China as well as Dallas and Las Vegas in the United States. As the pioneer and pedigree in the industry, Diamond Life Group has over 30 years of rich experience in design and manufacture of high quality lighting fixtures. Diamond Life is a handful of enterprises who owned a completely production chain within lighting industry. Diamond Life with over 20 years of cooperation history with Swarovski, the company is also proud to be the first Swarovski Elements Co-Branding Partner in Asia.

Diamond Life International Lighting Group's Design Team has more than 100 experienced designers, who gained decades of experience through intensive development as well as partnership with leading architects and interior designers to participate in various numbers of significant projects. Diamond Life's Research & Development headquarter located in Las Vegas, USA and domestically. Diamond Life's state-of-the-art manufacturing facilities consist of area over 88,000 square meters of floor spaces and employs more than 2,000 skilled artisans and engineers. The facility had the world's most advanced equipment including ultra-modern laser cutting equipment. Diamond Life's lighting fixtures can be found in more than 100 countries, over 1,000 renowned hotels and distinguished architectural projects, such as the Atlantis Dubai in Palm Island, The Venetian Hotel and Casino Las Vegas in United States, The Langham Hotel in United Kingdom, etc.





NO.1

PROJECT TEAM

EMPLOYS *2,000*+

SKILLED ARTISANS & ENGINEERS

1,000+

RENOWNED HOTEL PROJECTS

128,000 *m*²

STATE-OF-THE-ART MANUFACTURING FACILITIES

35

YEARS OF HISTORY

6

KEY REGIONAL DISTRIBUTION
CENTRES WORLDWIDE

OVER *100*

PRODUCTION PROCESS

7

STAR QUALITY

THE WORLD'S LEADING LIGHTING SPECIALISTS



Contract & Hospitality Lighting Division

Diamond Life had been working for Custom & Hospitality projects all over the world. Installations can be found worldwide. Diamond Life's factories have the ability and expertise to interpret and produce any lighting design, no matter grand or small, intricate or basic.

Residential Lighting Division

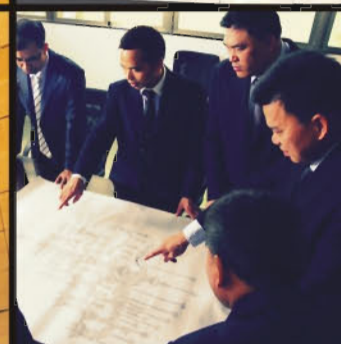
Diamond Life is operating a network of over 200 direct owned and franchised Crystal Chandelier stores nationwide. The division is operated under two brands. The "olannies®" brand is Swarovski's first co-branding partners and offers only 100% Swarovski @Crystal chandelier storewide. The "RENAISSANCE®" brand offers timeless Crystal Chandelier design with highest quality crystal around the world.

North American Subsidiary

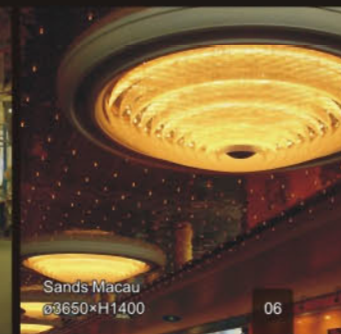
Kalco Lighting Limited was founded in 1981 with a fully integrated factory located in Las Vegas, Nevada. Kalco is a manufacturer and designer of primarily hand forged, hand painted high end, high quality innovative iron residential and commercial lighting fixture and accessories. Kalco had recently expanded its offering to include Crystal Chandelier and introduce its sister brands "Alegrí®"

Philippine Subsidiary

OEM International Inc, a manufacturer of high end hand forged Light Fittings, Furniture & Installations in Pampanga, Philippine since 1985. OEM had decades of experience focusing on creating unique and different handmade fixture with iron and various natural materials from the Philippine.



- A Hong Kong based company founded in 1979.
- An ISO 9001 Quality Certified Company.
- A leading specialist in the field of Custom Light Fittings & Installations with over three decades of experience.
- Undertakes numerals significant lighting projects at world's most prestigious hotels, casinos, and palaces.
- Established first China Manufacturing Facility in 1982, the oldest and most trusted names within the lighting industry in Mainland China with a reputation for quality that is unsurpassed.
- Large custom lighting factories across China, Philippines and Las Vegas, USA with state-of-the-art manufacturing facilities total area over 88,000 sq. mtrs.
- With over 2,000 skilled artisans, craftsmen and engineers execute any lighting design tailored to any budget.
- Manufactures a wide range of high quality lighting fixture and special feature for Hospitality Industry, furnished accommodations, villa compounds and institutions.
- Ability to execute large value projects efficiently and has successfully executed a wide spectrum of projects.
- Global presence spans throughout Europe, USA, Middle East and Asia.

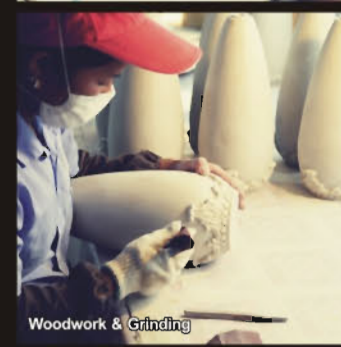




Personalized Meetings with Customers



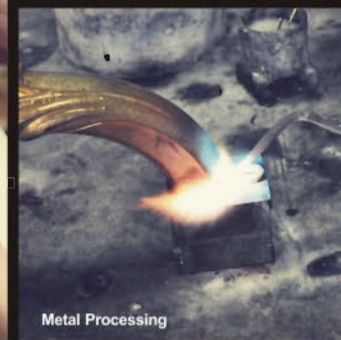
Raw Material Processing



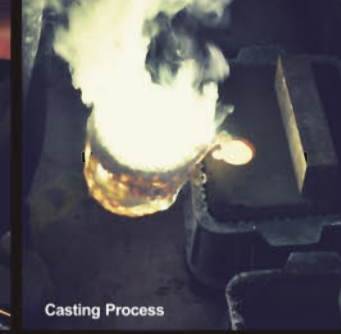
Woodwork & Grinding



Laser cutting



Metal Processing



Casting Process



Electroplating Process

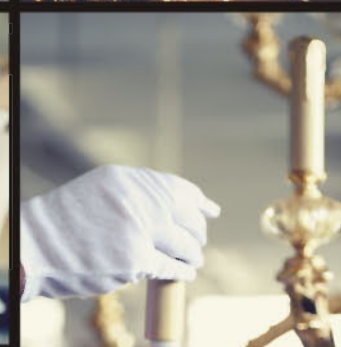


Unlimited Production Capabilities

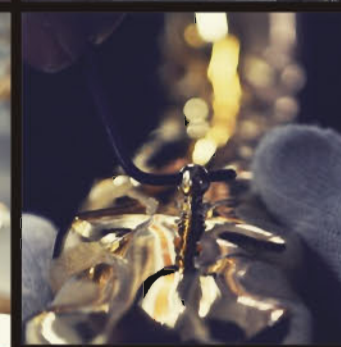
All production quality controlled under one roof allows us to offer our clients very delicate, detail-oriented and sophisticated products



Resin Casting



Finished Product Assembly



Finished Fixtures



Glass Processing



Shade Manufacturing



Painting Process



Artistic Finish Processing

g your Vision to **LIFE!**

REALIZATION

the fittings and lighting installations on project basis to meet individual
 ected in the shop drawings is enhanced by our strong engineering capabilities.

tractors

installation and supervision

od

4 BRACKETS

PORT PORTHOLE

3-D DETAIL

TYPICAL INTERIOR WELDING JOINTS

- Consultancy of Lighting Design
- Recommendations on Lighting Specification
- Professional Technical Advice and Support
- CAD Engineering and Shop Drawing Preparations
- Product Demonstration and Sample Supply
- High Quality Tailor-Made Lighting Fittings Manufacture
- Co-ordination with client's Interior Designers and Contractors
- Production Report
- Product Certification Testing
- Professional Packing Service
- Installation Consulting
- Complete on-site testing & commissioning, assembly, installation and supervision
- Post Installation Maintenance within our Warranty Period





Chimelong Hengqin Bay Hotel

Worldwide Projects Exceeding Expectation



Lake Silver, Hongkong L425000×H2900×W1800



Sheraton Huzhou Hot Spring Resort



Marina Bay Sands L20000×H3400×W5000



11 Grand Hyatt, Doha, Qatar ø4000×H3200



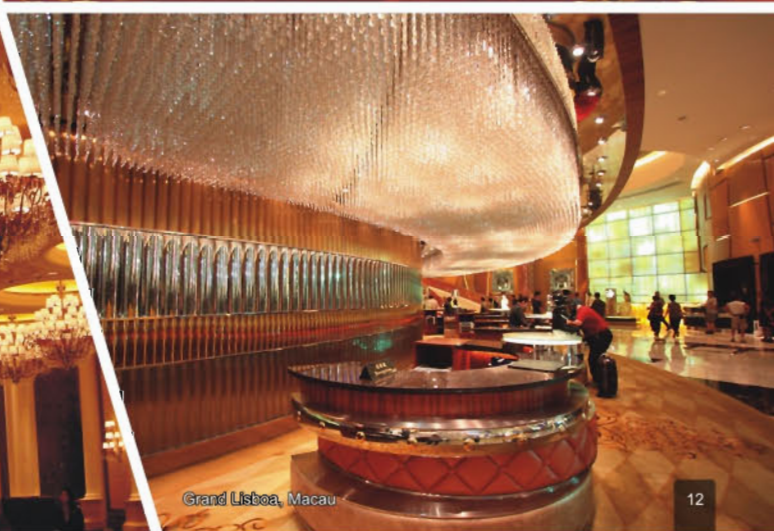
Chimelong Hengqin Bay Hotel



Kempinski Hotel, Dalian



Four Seasons Hotel, Macau ø2400×H2800



Grand Lisboa, Macau



White Swan Hotel, Changsha L1200×H450×W1200



Sheraton Sanya Resort Hotel, Hainan

Our footprint across five continents,
illuminating more than 100 countries and regions,
over 1,000 signature hotels
and renowned architectural projects.



The St. Regis, Shenzhen



Anhui Crowne Plaza Hotel L4600×H1680×W3500



13 Renaissance Sanya Resort & Spa L8173×H1000×W6907



Howard Johnson Resort Sanya Bay, Hainan



Pullman Dongguan Forum Hotel L9470×H900×W3600



Guangzhou Sun Hung Kai - The Lake Dragon
ø2600×H4000



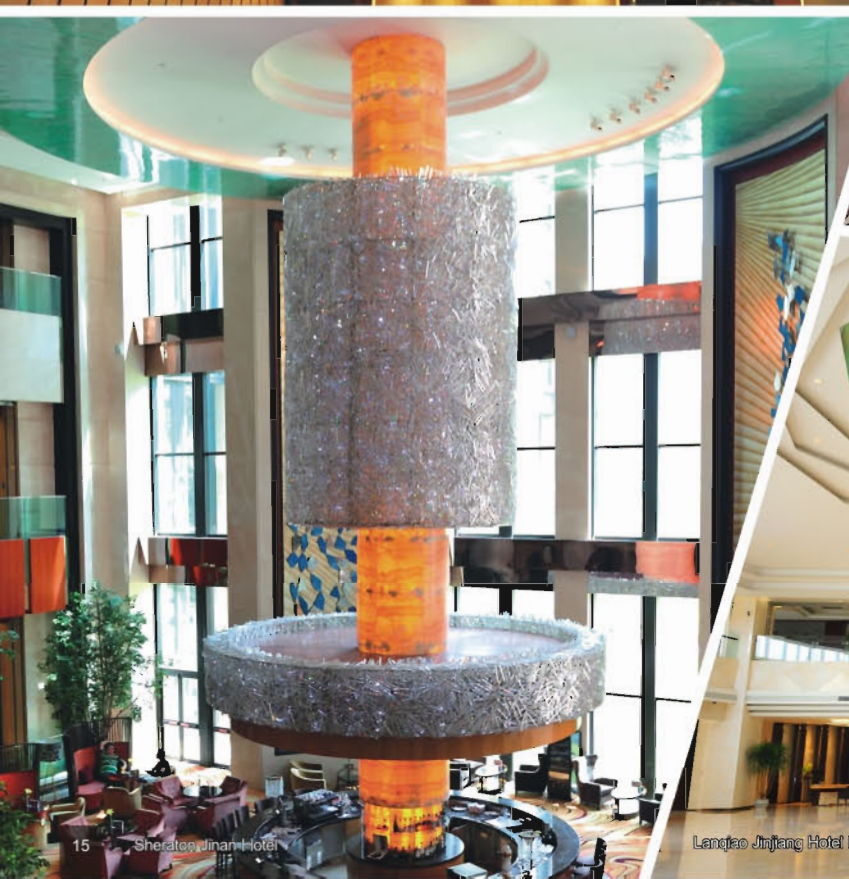
Jing Guang New World Hotel, Beijing



Kunlun Hotel, Beijing ø3300×H3230



Pullman Sanya Long Bay Resort & Spa

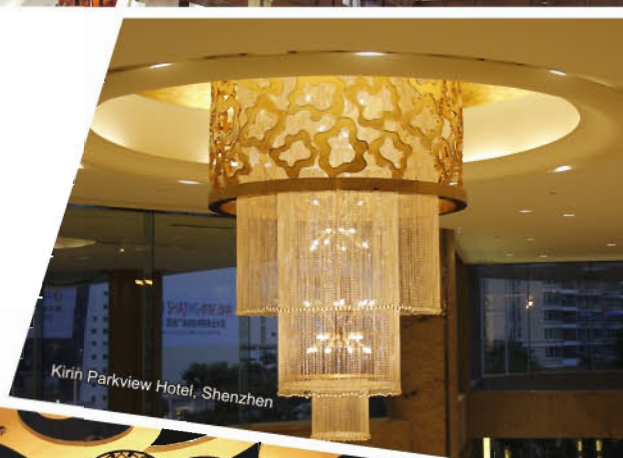


15 Sheraton Jinjiang Hotel



Lanqiao Jinjiang Hotel Rizhao

Lighting Projects Masterpieces More Than 30 Years Of Brilliant Performance



Kirin Parkview Hotel, Shenzhen



Sheraton Qingyuan Lion Lake Resort ø3000×H1800



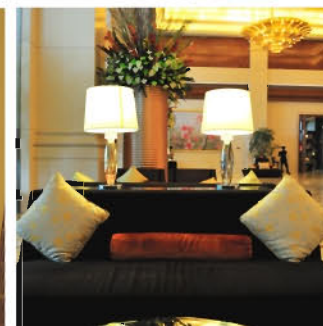
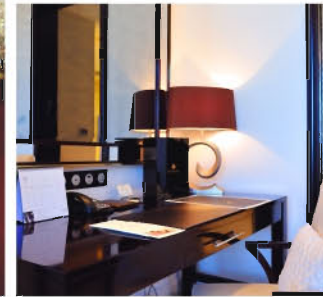
Marriott China Hotel, Guangzhou

L14935×H1450×W7500



Lake Silver, Hong Kong

L3160×H4800×W6960



Our portfolio of projects includes a collection of Luxury Hotels & Resorts, Casino, Private Residences, Places of Worship, Government & Public Buildings, Commercial Spaces and Ultra Luxury Palaces.

